

Keyneton Wind Farm

Invitation to our neighbours

Pacific Hydro is developing a wind farm in Keyneton, South Australia. The site is located 6km west of Sedan and 10km south east of Angaston and runs approximately 15km along the Mount Lofty Ranges.

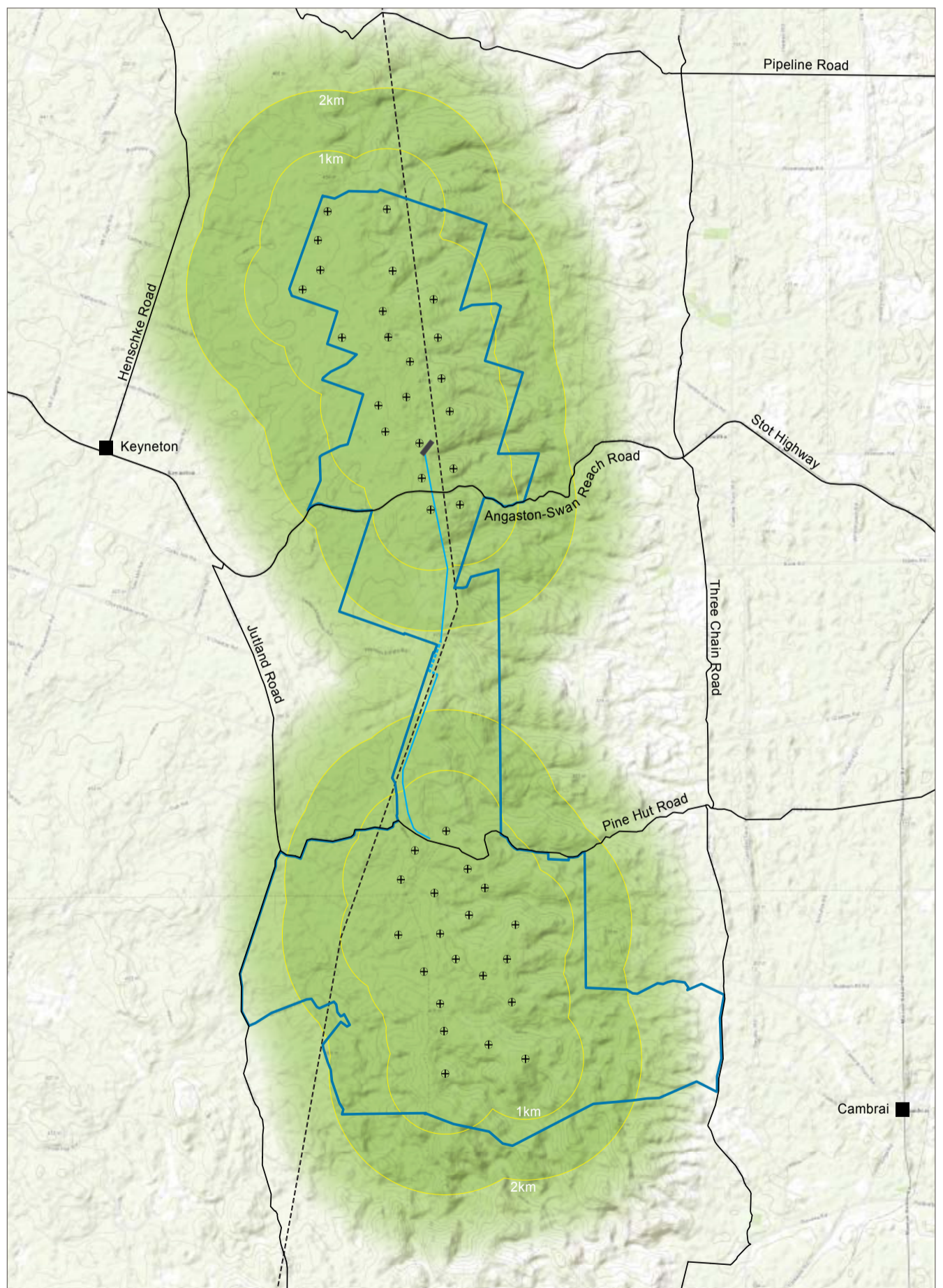
An invitation to meet with neighbours

Project representatives will be in Keyneton on Wednesday 13 and Thursday 14 June 2018 to meet individually with residents living within a 3km radius of the wind farm (refer to map overleaf). The purpose of these meetings is to enable Pacific Hydro to hear from its neighbours to understand each resident's specific situation in relation to the wind farm and address any questions.

If you live or own a property within a 3km radius (as outlined on the map), please contact the project team to arrange a meeting time on **1800 730 734** or email **enquiries@pacifichydro.com.au**

Upcoming community information session

While the initial meetings are to understand individual circumstances for those living closest to the wind farm, Pacific Hydro is committed to engaging with all of its stakeholders and is planning a community information session for the end of June. Further details will be provided in the coming weeks and will also be available at www.pacifichydro.com.au



Further Information

For project updates, please register your details with us via:

Phone: 1800 730 734

E-mail: enquiries@pacifichydro.com.au

Web: www.pacifichydro.com.au

**Post: Level 13,
700 Collins Street,
Docklands VIC 3008**

