



Crowlands Wind Farm Project

Wind Energy

Wind is one of the oldest sources of power harnessed by humans, and a clean, efficient way to generate electricity from a renewable energy source.

Victoria has some of the best wind resources in Australia, both along the southern coastline and in select inland areas such as Crowlands.

The wind turbines installed in the project will convert the energy in moving air into electricity, supplying it to the National Electricity Market.

When completed, the project will consist of 39 turbines that will produce clean energy equivalent to the yearly needs of over 50,000 Victorian homes.



Overview

Pacific Hydro's Crowlands site is situated in western Victoria's Pyrenees Shire Council, 25 km north-east of Ararat (205km west of Melbourne).

The project site was chosen because it has strong, consistent winds; proximity and access to the electricity grid; and compatible existing land uses.

Approval

After a period of community consultation that began in 2004, the project was granted planning approval in August 2010.

Following pre construction assessments, consultations, and reviews, the layout for the project has been refined and reduced. Planning approval to construct and operate the project was granted to Pacific Hydro in 2013.

The Crowlands Wind Farm has been designed to meet community and environmental considerations.

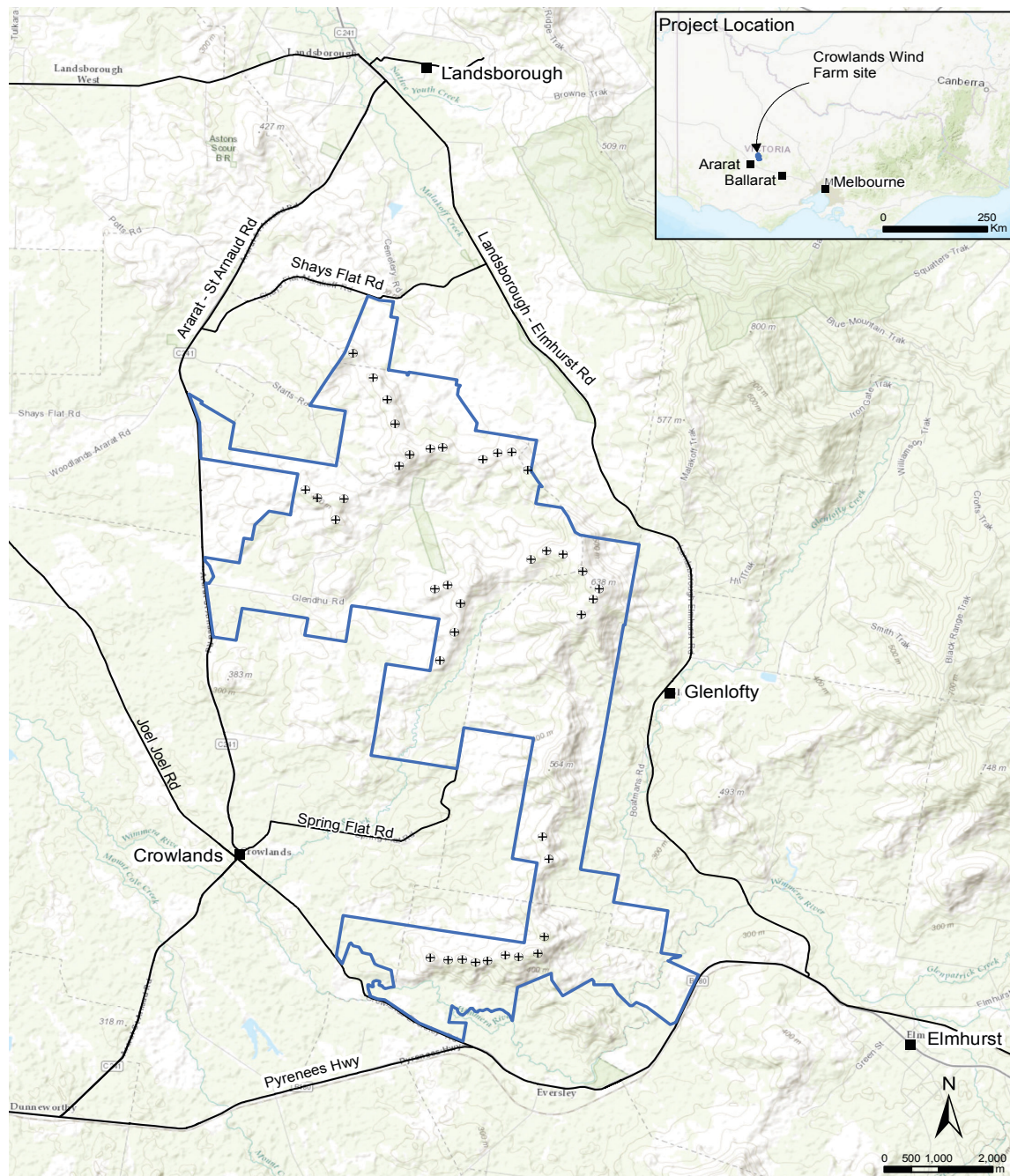
Key Local Benefits

Pacific Hydro has a strong track record of delivering lasting benefits to the local communities in which our projects are located.

The project will deliver a boost to the local economy with local construction jobs; local suppliers and contractors will also be engaged for the construction and delivery of the project wherever possible.

The project will help to maintain and further grow local capabilities in renewable energy project construction, diversify local skills, and contribute to the prosperity of the local economy.

Number of Turbines	39
Wind Turbine Generator Model	Senvion MM92 2.05MW
Total Project Installed Capacity	79.95MW
Maximum Hub Height	100 metres
Maximum Tip Height	146.5 metres
Pollution abatement (per year)	204,800 tonnes (approx)



About Pacific Hydro

Founded in Australia in 1992, Pacific Hydro is a global owner, operator and developer of renewable energy assets.

Pacific Hydro is owned by State Power Investment Corporation (SPIC) through State Power Investment Overseas Co. Ltd of China (SPIC Overseas).

Further Information

For project updates, please register your details with us via:

Phone	1800 730 734
E-mail	enquiries@pacifichydro.com.au
Web	www.pacifichydro.com.au
Post	Level 13, 700 Collins Street Docklands VIC 3008