



Yaloak South Wind Farm Project

Wind Energy

Wind is one of the oldest sources of power harnessed by humans, and a clean, efficient way to generate electricity from a renewable energy source.

Victoria has some of the best wind resources in Australia, both along the southern coastline and in select inland areas such as Yaloak South.

The wind turbines installed in the project will convert the energy in moving air into electrical energy, supplying it in to the local electricity network.

When completed, the project will be capable of producing enough electricity to power 15,700 homes and abate approximately 70,667 tonnes of greenhouse gas pollution per year.



Overview

Pacific Hydro's Yaloak South site is situated at the western end of the Parwan Valley near Ballan, within the Moorabool Shire.

It is approximately one hour (82 kilometres) from Melbourne.

The project site was chosen because it has strong, consistent winds; its proximity and access to the electricity grid; and compatible existing land uses.

Approval

In 2010 Pacific Hydro received planning approval to construct and operate a 14 turbine, 29MW wind farm at Yaloak South.

As this will be one of the closest wind farms to Melbourne, it has the potential to create interest from tourists, students, and the public who want to learn more about this clean energy source.

The Yaloak South Wind Farm has been designed to meet community and environmental considerations.

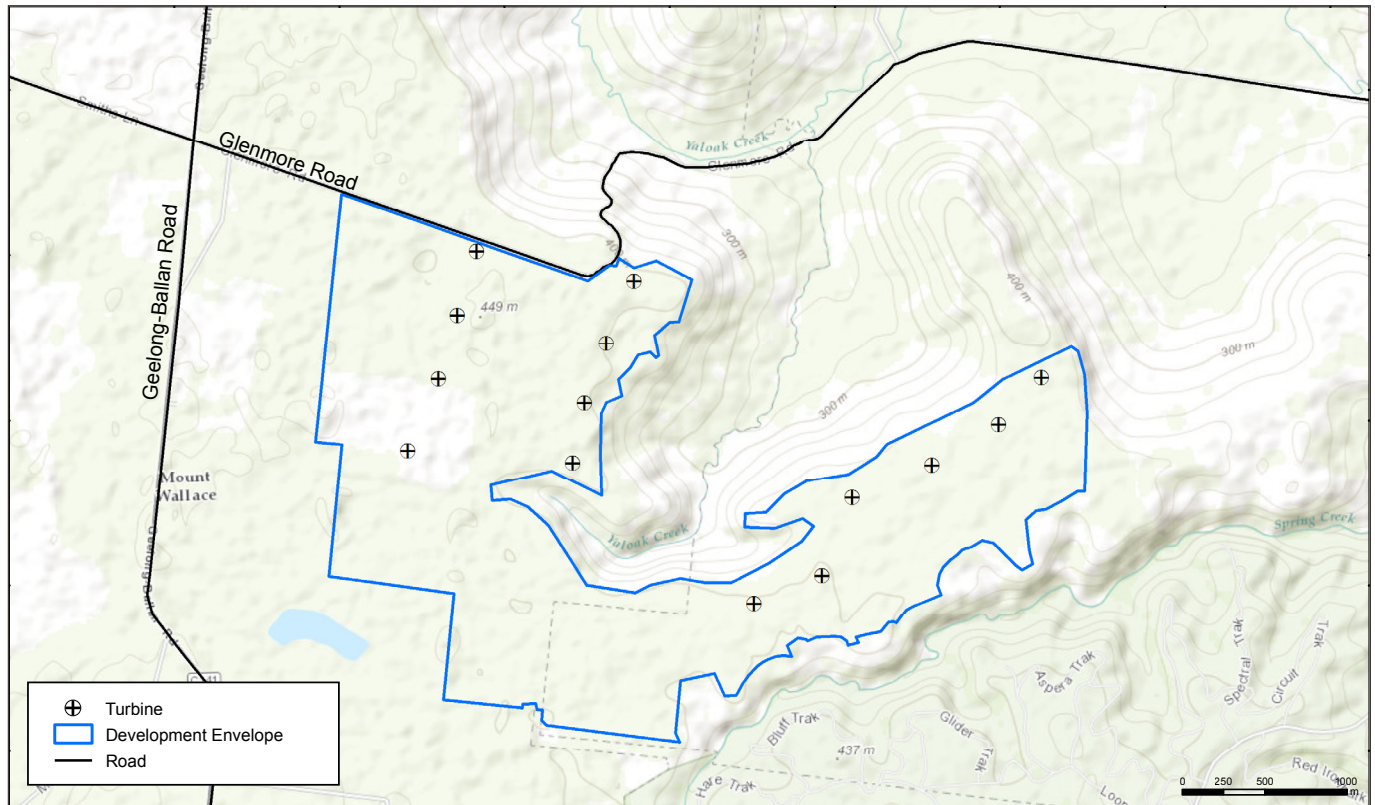
Layout

The approved project layout has been designed to meet environmental and community considerations.

Reduced turbine numbers and positioning minimises the visual impact on the Parwan Valley; and reduces potential impact on Wedge-Tailed Eagles.

The project comprises fourteen Senvion MM92 wind turbine generators, rated at 2.05MW each, providing a total installed capacity of 28.7MW with a maximum hub height of 80m and maximum tip height of 126.25m.

Number of Turbines	14
Wind Turbine Generator Model	Senvion MM92 2.05MW
Total Project Installed Capacity	28.7MW
Maximum Hub Height	80 metres
Maximum Tip Height	126.25 metres
Pollution Abatement (per year)	70,667 tonnes (approx.)



Key Local Benefits

- A new electrical switching station installed on the local electricity distribution network
- Electrical sub-station will be positioned on-site and will be screened by existing vegetation
- Economic benefits for local businesses and suppliers
- Road upgrades
- No aviation lighting required
- Potential for use of on-site rock, minimising haulage
- Minimal native vegetation disturbance or removal
- The opportunity for members of the community to participate in a Community Partnerships Group
- Potential for a wind farm viewing platform that would provide an education and tourism attraction (subject to community preferences and any required approvals).

About Pacific Hydro

Founded in Australia in 1992, Pacific Hydro is a global owner, operator and developer of renewable energy assets.

Pacific Hydro is owned by State Power Investment Corporation (SPIC) through State Power Investment Overseas Co. Ltd of China (SPIC Overseas).

Further Information

For project updates, please register your details with us via:

Phone 1800 730 734
E-mail enquiries@pacifichydro.com.au
Web www.pacifichydro.com.au
Post Level 13, 700 Collins Street
 Docklands VIC 3008