

A photograph of a white wind turbine on a grassy hill under a cloudy sky. The image is overlaid with large, semi-transparent geometric shapes in shades of teal and green. The top right corner is a dark teal triangle. A large green shape covers the middle and bottom right. A teal shape covers the bottom left and middle. The wind turbine is on the left side, partially covered by the green shape.

Local Good

A decade of support
for sustainable communities



From our CEO



The planned life of a wind farm is twenty-five years.

Over such a long time, harmonious relationships with our local communities are essential – and just as critical to our success as technical or financial factors.

As a leading renewable energy company, being a good neighbour is central to how we do business. We seek to understand the community's perspective and share positive, lasting benefits in the course of our work.

Whether social, environmental, or economic, this takes more than just donations or sponsorships. Our goal is to empower local people to have their say, and tell us how and where our support can have the greatest impact. Rather than passive philanthropy, we believe it should be an active partnership.

The Community Investment Program is our strategy for giving back, using methods tailored to each of the local areas that host us. In Ararat, Clements Gap, and the Great South West our industry-leading Sustainable Communities Fund has provided more than \$2 million to 600+ projects.

As you will see in this book, the Fund has supported many solutions to community needs – all driven by passionate local people. We are proud to support and celebrate these projects and our neighbours who deliver them.

A handwritten signature in grey ink, reading "M. Fuge".

Mike Fuge
CEO

About the Fund

The Sustainable Communities Fund is our main community support in Ararat, Clements Gap, and the Great South West.

It provides financial support to community groups and organisations that are working to make a positive and lasting contribution.

We aim to support projects that are community priorities, provide lasting benefit, and address local need in one or more of these aspects.

Health and Welfare

Projects that enhance, support, and promote the health and welfare of community members, including relief of poverty, sickness, or distress.

Education and Training

Projects that broaden access to and enhance the quality of education and training in the local region.

Environment

Projects and initiatives that support the conservation and rehabilitation of the environment in the local area and/or help to reduce emissions, waste, and promote environmentally sustainable practices.

Sport and Recreation

Projects that enhance, support, and promote healthy and active sport and recreational activities in the local community.

Cultural and Arts

Events, festivals, programs, and initiatives that foster, support, and promote a vibrant cultural, artistic, and community life.



Clements Gap SA

\$385,000

107 Projects

Our Support

Since 2005, the Sustainable Communities Fund has provided more than \$2 million to over 600 local projects.

Our partnerships provide more than just financial support. We use our in-house capabilities and services to provide a range of other help, including marketing and communications, donations of refurbished technology and ICT equipment, and workplace training.

Ararat VIC

\$550,000

205 Projects

Great South West VIC

\$1,200,000

300 Projects



Clements Gap Wind Farm, South Australia



Tennis Court Refurbishment
Redhill Tennis Club, South Australia



Portland Kyokushin Karate Club

Victoria – Great South West Fund

Kyokushin (Japanese for “the ultimate truth”) is a style of stand-up, full contact karate. With over 12 million estimated followers across the world, it was founded in 1964 by a Korean-Japanese man Masutatsu Oyama, and promotes a philosophy of self-improvement, discipline and hard training.

The local chapter in Portland has been operating since 2010, and has grown to over 65 members. It provides an alternative activity to mainstream sports, and aims to develop strong community relationships.

In addition to tournaments and competitions, the group also offers courses in personal security and simple self-defence.

Cardiac arrest is a major cause of death in Australia, and every second that passes from collapse until resuscitation or defibrillation is crucial. Each minute can reduce the chance of survival by 10%, so early response can save lives.

Pacific Hydro helped the club to purchase a defibrillator, CPR masks, thermal blankets, and other essential lifesaving equipment. These are available to all members, guests, and the local community. The equipment has also been listed on AED registers, ensuring it is available to all in an emergency.





Port Broughton Heritage Centre

South Australia –Clements Gap Fund

The township of Port Broughton was founded in 1878 and was a vital shipping port for cereal grains grown in the nearby agricultural districts of South Australia's Mid-North region. Now a popular seaside holiday destination, the local population of 1600 residents now hosts visitors from all over the world.

The Port Broughton Historical Society has managed the Port Broughton Heritage Centre since 1987. Housed in the original town school, this museum presents displays and artefacts from the local area including the Plangon Doll Display; School and War Display; Boat and Wheat Trade; and the Ladies' Room.

As a rich repository of local history, the museum's volunteers are custodians of items that are essential to a local sense of community, place, and belonging.

Pacific Hydro was proud to support the Society by funding the installation of a solar photovoltaic power system, installed on the roof of the exhibition shed. With a good year-round solar resource, Port Broughton is an ideal place to harness clean energy from the sun.

The solar power system has helped to reduce the running costs of the Centre, freeing up vital funds to enhance and grow the collection and ensure its long term viability by keeping operating costs down. Installation was also completed by suppliers from the nearby area, supporting the local economy.



The extensive collection at the Port Broughton Heritage Centre includes the Plangon Doll collection and local items of significance.





Port Broughton Heritage Centre





Portland District Therapy Dogs

Victoria – Great South West Fund

For many seniors in the south west of Victoria, a move into assisted care often comes after a life of working on the land with dogs. Sadly, these canine companions are not able to join them.

Recognising the many positive benefits of human and animal interaction, the Portland District Therapy Dogs were established to provide these opportunities for members of the community without this regular animal contact.

The group engages, trains, and tasks therapy teams of local dogs and their human volunteers. They visit nursing homes, hospitals, care facilities, and schools, enhancing wellbeing and quality of life.

The group applied to the Sustainable Communities Fund to expand the program by 10 teams, covering training, volunteer checks, and uniforms for new recruits.

The value of the program to the local community and professional organisation of the group stood out during the fund allocation process. With scope to provide additional support, Pacific Hydro made a further donation, helping the program to expand by another 13 teams.

As well as increasing the number of facilities they can visit, this support has enabled the Therapy Dogs to partner with local primary schools to roll out an innovative literacy program – where students read aloud to the therapy dogs! Best of all, the kids are excited to be involved.

Reading in such a safe environment is a supportive way for students to practice; it also fosters empathy and provides a peaceful interaction with the animals.





Port Broughton SES

South Australia – Clements Gap Fund

The State Emergency Service (SES) is comprised of local volunteer-run community organisations that provide emergency help. With over 1700 volunteers in South Australia, they respond to road crash rescue, marine rescue, searches, storm, flood and other extreme weather events.

As one of 67 volunteer units in the state, Port Broughton SES is often called to attend road crashes as a first response unit.

One vehicle in the Port Broughton Unit was equipped with an on-board emergency computer. This technology helps crews to be better informed about the incident they are attending and better co-ordinate their response.

Pacific Hydro supported the Unit's purchase of two additional computer units for other vehicles in their fleet. In a road crash, this provides access to live information about the exact location of the incident, casualties, other resources that are required or on the way, and details about the vehicles involved.

Having prompt access to this information – rather than relying on a liaison back at the Unit base – contributes to a safer, more efficient rescue response. Any time saved in life threatening emergencies is of benefit to all involved.







Crystal Brook CWA

South Australia – Clements Gap Fund



Since 1929, the South Australian Country Women's Association has been serving the community, promoting the welfare of women and children across the state.

The Crystal Brook chapter of the CWA operates a hall used by a variety of local organisations and groups.

With a bustling calendar of events, it hosts the well-attended bridge club, indoor bowls, cake decorating, weekend workshops, and fundraisers; providing full kitchen facilities and an accessible meeting space available at minimal cost.

As such an important hub, Pacific Hydro provided a grant to replace worn-out carpets, which were becoming a safety concern, particularly for elderly patrons. This upgrade has ensured the hall can continue to serve as a meeting place and focal point for the local community.





Crystal Brook Heritage Centre

South Australia – Clements Gap Fund

Located in the town's first double storey building, the Crystal Brook Heritage Centre preserves and shares the town's rich history with visitors, researchers, and local people alike. Located in the former butcher and baker's shop and adjoining residence, the complex dates back to 1875 and features a unique underground bakehouse, reportedly the only one of its kind open to the public.

An important archive and celebration of local history, the Centre is integral to the preservation of history in the town and surrounding areas and is staffed by a team of very enthusiastic volunteers.

The collection includes a number of remarkable objects including the first chrome washing/drying machine imported into South Australia in 1914; machinery showcasing the agricultural and railway history of the town; and an archive of documents and letters belonging to Corporal Arthur Percy Sullivan, a notable Crystal Brook resident and Victoria Cross recipient.

Pacific Hydro supported the Heritage Centre with a grant to reconstruct a mezzanine in the underground bakery and undertake repairs to a veranda area in partnership with the local Mens' Shed. This will ensure the Centre can continue to share the story of Crystal Brook for many years to come.



The collection of locally significant artefacts on display at the Crystal Brook Heritage Centre includes farming, industrial, railway, household, and military ephemera.



Crystal Brook Heritage Centre - historic underground bakehouse







By this time, the evacuation of Dunkirk was complete. To direct the evacuation, the British Army was withdrawn to the coast. On 4 September, the evacuation operation was completed. The British Army returned home five days later. The evacuation received the Victoria Cross. The 45th Battalion, the Royal Canadian Regiment, the Royal Canadian Mounted Police, the 45th Battalion, the

Basalt to Bay Landcare

Victoria – Great South West Fund

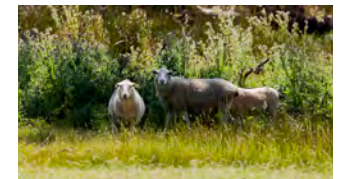
Basalt to Bay Landcare Group is a collective of farmers, environmentalists, and local people established to care for the land and water in the south west of Victoria. They aim to protect, restore, and sustain the ecological health of the natural environment by aligning environmental management with land productivity.

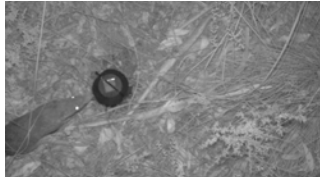
With a common goal, the group seeks to create large-scale landscape change in the Hopkins and Moyne River catchments in partnership with members, local organisations, farmers, businesses, and communities.

In 2012, the group applied to the Sustainable Communities Fund to buy remote sensing cameras. These were needed to monitor endangered species activity in the local area; particularly the southern brown bandicoot at St. Helen's Flora Reserve, close to Pacific Hydro's Yambuk Wind Farm.

The cameras quickly proved their worth by not only capturing this evidence, but also fox activity. This helped to mobilize action to eradicate these introduced predators and other pest species, and bolstered the case for farmers and landholders to plant shelter belts on their properties.

These provide habitat corridors for the bandicoots as well as swamp rats, echidnas, and native birds, enabling them to move through the landscape more easily compared to open farmland. Shelter belts also have benefits for farming and livestock, with wool yields improved by around 30% for flocks kept in paddocks where they are planted.





Images of foxes and the Southern Brown Bandicoot captured by the remote sensing cameras. (Photos this page: Basalt to Bay Landcare)

This simple project helped Basalt to Bay to save this iconic species from being another on the list of extinctions, and led to a range of positive local outcomes. It caught the attention of senior people in politics and government, unlocking grants and further support.

And for business? Wool buyers as far away as Italy are now building their sustainability credentials on the back of this case study; while neighbouring farmers are also accommodating shelter belts on their properties. It's a win for landholders, local people, and the environment.

This project shows how many positive outcomes can be realised when industry works together with multiple stakeholders and community groups, delivering enduring results that reach far beyond the wind farm.





Belfast Aquatics

Victoria – Great South West Fund



Belfast Aquatics is a community owned and operated heated pool and gym complex in Port Fairy, close to Yambuk and Codrington Wind Farms. It provides a low-cost facility where people can improve and maintain fitness and good health. The complex also provides swimming classes to ensure water safety and awareness in the community.

As a community organisation on a limited budget, any reduction in operating costs makes money available for other initiatives. Pacific Hydro has supported Belfast Aquatics over several years to complete several important upgrades to the facility, most recently a lighting upgrade.

The facility had six metal halide lights used to provide safe and adequate lighting of the pool area which were big users of electricity. Pacific Hydro provided a grant so that these could be replaced with more energy-efficient LED lights, providing the same lighting at a fraction of the cost.

The new lights consume less than a third of the power used by the old lights, resulting in a saving of thousands of dollars every year that can be put to other uses. The LEDs also last longer, significantly reducing the need to change out globes.

Now that's a bright future.





Bridgewater Lakes Aquatic Club

Victoria – Great South West Fund

Formed in 1964, the Bridgewater Lakes Aquatic Club supports the responsible use of the Bridgewater Lakes for recreation by local families.

Running along an ancient geological fault line and separated from the sea by sand dunes, the Lakes are a tranquil, freshwater lagoon perfectly suited to watersports such as water-skiing and canoeing.

With over 200 members, the Club has worked with Pacific Hydro since the inaugural Portland Sustainable Communities Fund in 2007, receiving support for a number of significant safety and sustainability initiatives.

These have improved the quality of the facilities available to their members, including solar hot water, a new ramp, and upgrades to the building.

In 2016 the Club applied for assistance to repair the kitchen and bathroom facilities at the clubhouse, to provide a safe environment and improve the useful life of the building. A dedicated team of volunteers, supported by local tradespeople, completed these works.

The detailed planning and future aims of the club were evident in the fund allocation process; with future stages of work outlined clearly, to be completed with future fundraising. On top of the grant, Pacific Hydro provided an additional donation which allowed the club to bring forward completion of these works in time for summer.

The result is an upgraded community facility that supports local recreation in this picturesque part of the world.



Portland Community Garden

Victoria – Great South West Fund



Established in 2013, the Portland Community Garden is located on land owned by the Dhauwurd Wurrung Elderly and Community Health Service Inc. and Glenelg Shire. The group has turned a formerly vacant area into a productive hub that engages the whole community to grow and harvest food, and promote sustainable living.



The Garden is an open and inclusive space, accepting of all; it also hosts unemployed and disadvantaged members of the community, providing new skills and support.



The Garden turns donated timber into useful equipment, and accepts green waste which is turned into compost. These are sold to benefit the Garden instead of being sent to landfill.



The Garden approached Pacific Hydro with a proposal to assist in the purchase of a secondhand front-end loader tractor. This would make it easier for the volunteers to move timber and compost materials around the site and reduce costs, as this work was being completed by contractors and smaller, loaned machinery as and when it was available.

Just as the fund allocation process began, the tractor the Garden had aimed to purchase was suddenly no longer available. But in a stroke of great timing, a local supplier had just started offering a new machine of a much greater capacity – at a similar price.

Recognising the importance of the Garden's work in the local area, Pacific Hydro provided a grant and an additional donation. Combined with their own fundraising efforts, they were able to purchase the new, bigger machine sooner.

It's now making light work of the heavy lifting tasks around the site, supporting the important work of the Garden – and all for the benefit of the Portland community.

The old and the new: the bigger tractor is put through its paces, showing its greater capacity.





Mundoora Community Progress Association

South Australia – Clements Gap Fund

The township of Mundoora has seen many changes over time; the expansion of farming in the district to the opening (and closing) of the tramway to Port Broughton; even connection to the electricity grid. Today, at the forefront of positive development is the Mundoora Community Progress Association, a dedicated group of local volunteers who are responsible for more recent improvements in the town.

Firmly rooted in old fashioned community spirit and commitment to getting things done, the Association has been supported by grants from Pacific Hydro over the past decade, helping them deliver projects of local benefit.

In 2012 the team worked tirelessly to ensure the centrepiece of the town's centenary celebrations – the Mundoora Soldiers Memorial Institute – was fit for the occasion. A Sustainable Communities Fund grant helped to upgrade the kitchen area; with these upgraded facilities, the building now hosts a number of regular events through the week, as well as functions.

In partnership with the Association and Mundoora Tennis Club, Pacific Hydro also supported the installation of a shared rainwater tank to collect water from both facilities. The water is used by community groups and local residents, and is available as an emergency resource for firefighting.

Most recently the Fund supported a project to complete part of the outdoor museum that celebrates the farming and industrial history of the area.





Friends of St Brigid's

Victoria – Great South West Fund

In regional Australia, the local church was a central part of the village, often built by the hard work of local people. St Brigid's was one such community-built place of worship, completed in 1914 thanks to local families who donated land and raised £6000 for the bricks and mortar.

With the advent of cars and expansion of towns, interest in these old chapels (and their congregations) dwindled over time. With the church being underused, the local Catholic parish decided to sell St Brigid's in 2009.

A campaign led by local people – many descended from the church's original founding families – launched a fundraising effort to buy the church buildings. After years of raffles, markets, and concerts, they raised \$50,000 and beat commercial bids to keep St Brigid's in the hands of the community.

The Friends were formed to preserve and restore the facility, creating an accessible community gathering space suitable for meetings and events; and to preserve the unique cultural history of the local area.

St Brigid's now boasts a bustling programme of performances throughout the week, and serves as a centre for the region's strong Irish cultural heritage.

Pacific Hydro has supported St Brigid's over several years, helping with building upgrades and new equipment. In 2016 the group applied for a grant to upgrade the sound system to one better suited to the wide range of community events and celebrations hosted in the old church.

The new gear has enabled St Brigid's to accommodate a wider range of performers, which they had previously been unable to accept. This has improved their public offering and supported their long-term sustainability, providing a unique venue for local and international performers alike.







Heywood Men's Shed

Victoria – Great South West Fund

The Heywood Men's Shed was established to serve the town and community of Heywood and the Shire of Glenelg in South West Victoria, supporting men in need of help through mentoring, sharing, and positive interaction.

It is a vibrant, well-respected organisation that provides a range of social activities and support. Open throughout the week, the Shed helps to keep men active in a stress-free environment. Central to their mission has been the development of health programs that help men to be active managers of their own health with offerings that include a walking group, health days, and fundraisers. Beyond this, the Shed also provides a connection to other services in the community, improving health and wellbeing.

The Shed also collaborates with local organisations to complete gardening and maintenance jobs, bicycle recycling, and billy-cart building. Men's Shed volunteers also assist the neighbouring Rural Health Service with community activities, support, and patient transport services. No project is too big or small for this 'can-do' group.

Pacific Hydro supported the Shed with building and facility upgrades, most recently funding the addition of an awning to the building that has provided a large under-cover area, improving access in all weather conditions. This will help them to serve local needs for years to come.





About Us



Founded in Australia in 1992, Pacific Hydro is a global renewable energy owner, operator and developer.

The assets we operate across Chile, Australia and Brazil have an installed capacity over 850 MW. We have a substantial number of wind, hydro, and solar projects in development totalling over 1.7 GW of potential capacity and a growing electricity retail business in Australia.

Pacific Hydro has been active in Australia since the early 1990s with over 350 MW of installed wind and hydro capacity. We expanded into Chile in 2002, and have delivered (with our partners) three large-scale run-of-river hydro projects. We have also been active in Brazil since 2006, with two operational wind assets and a solid pipeline of projects currently under development.



Pacific Hydro was acquired by the State Power Investment Corporation (SPIC) through State Power Investment Overseas of China (SPIC Overseas) in January 2016, after obtaining approval from the Australian Government's Foreign Investment Review Board (FIRB) and participating in a highly competitive international sale process.

SPIC is one of the top five power generation groups in China, with US\$113 billion total assets and a total installed capacity that exceeds 100 GW. SPIC operates in the generation, coal, aluminium, logistics, finance, environmental protection and high technology industries. SPIC has a presence in 36 countries and regions abroad, including Australia, Chile, Malta, Japan, Brazil, Turkey and Vietnam.

Pacific Hydro has built a strong reputation for engaging with the communities in which we operate, and a proven record of delivering lasting benefits to local areas.

All photos and design © Pacific Hydro - Engagement and External Affairs team
2017 unless otherwise indicated.



Cape Nelson Lighthouse

The image features a wind turbine in the lower right quadrant, set against a background of rolling hills and a sky with soft clouds. The entire scene is overlaid with a semi-transparent blue and green color scheme. Large, overlapping geometric shapes, including triangles and polygons, create a modern, abstract design. The wind turbine's blades are visible, and the overall composition suggests a focus on renewable energy.

www.pacifichydro.com.au