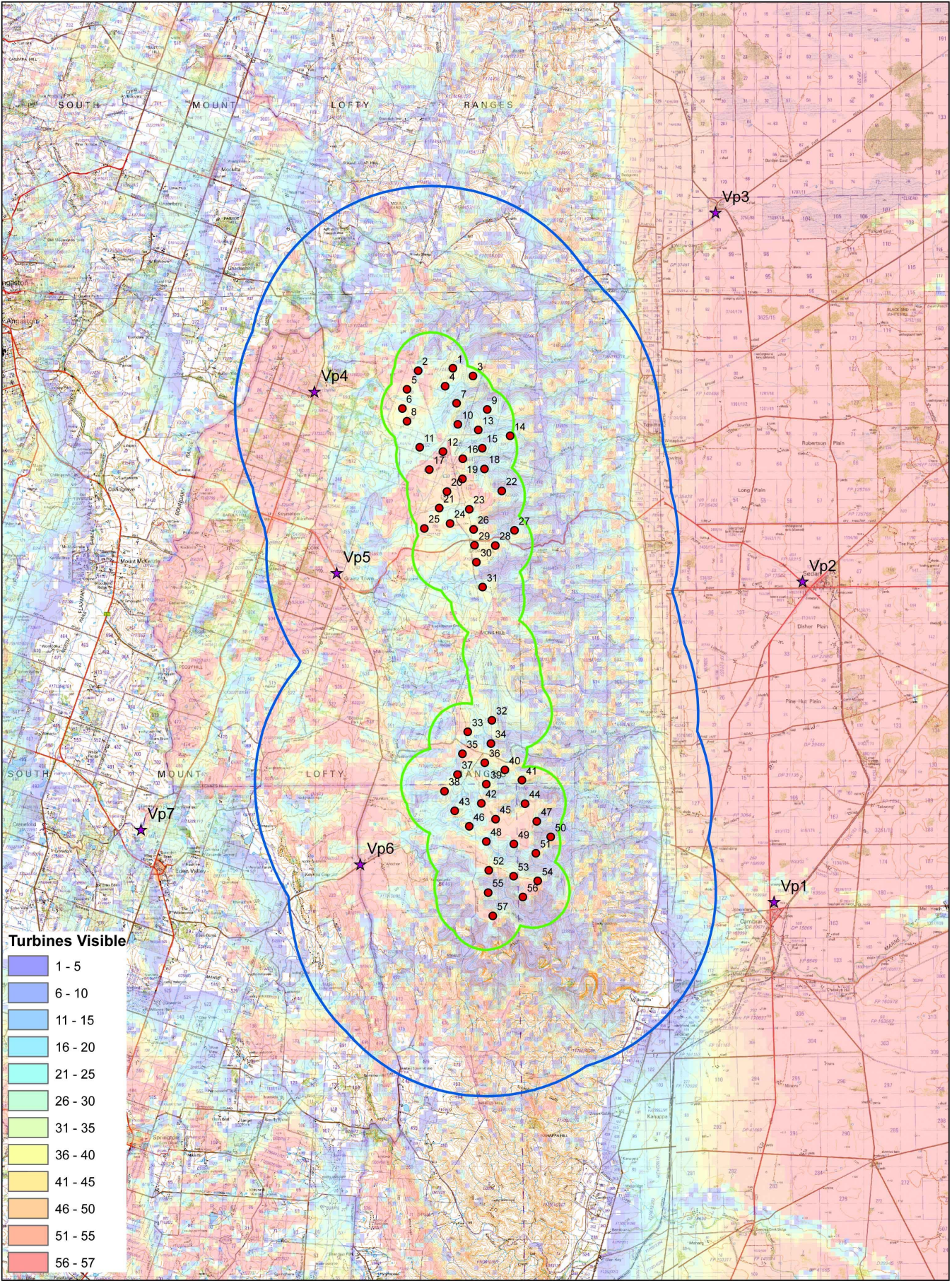


Zone of Theoretical Visual Influence- Hub Height

Note: ZTVI illustrates the potential visibility of turbines to hub height (95m AGL). The ZTVI represents a conservative estimate of the number of turbines that are potentially visible using a 10m digital terrain model with no mapping or calculated effect of vegetation or built form screening.





Note: ZTVI illustrates the potential visibility of turbines to tip of blade (145.5m AGL). The ZTVI represents a conservative estimate of the number of turbines that are potentially visible using a 10m digital terrain model with no mapping or calculated effect of vegetation or built form screening.

00.51 2 3 4  
Kilometers

